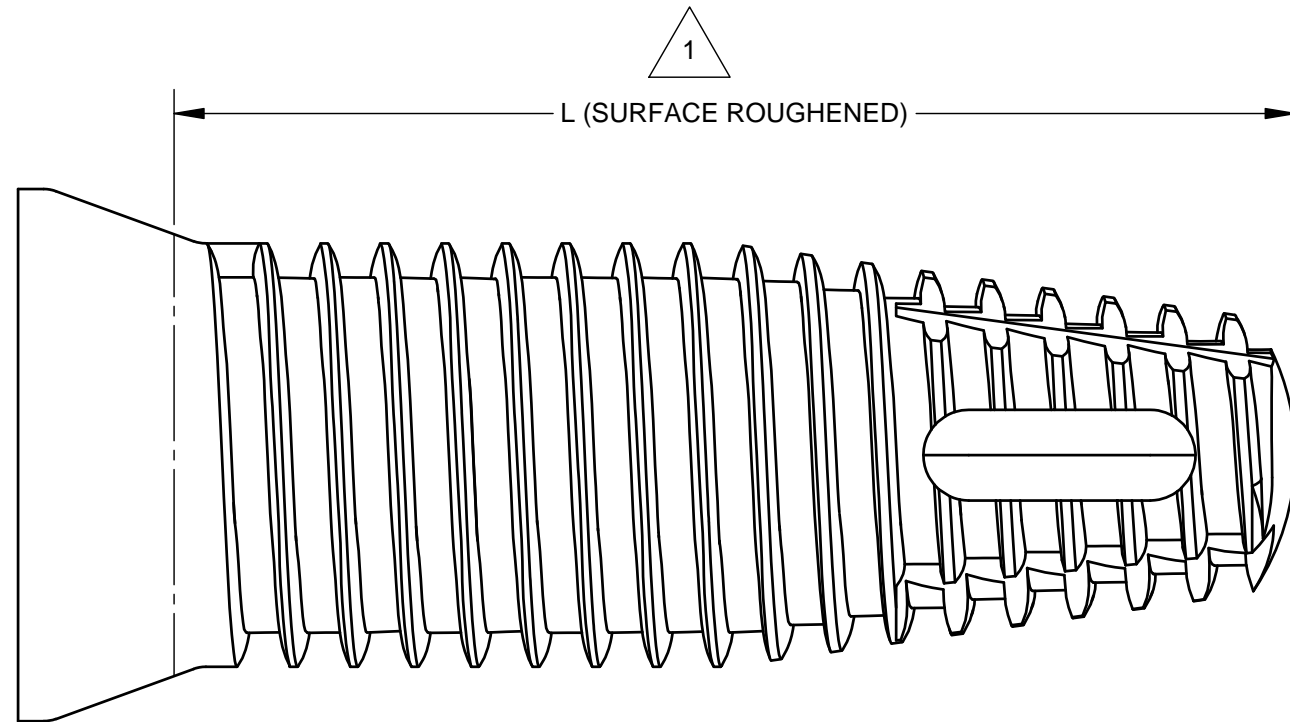
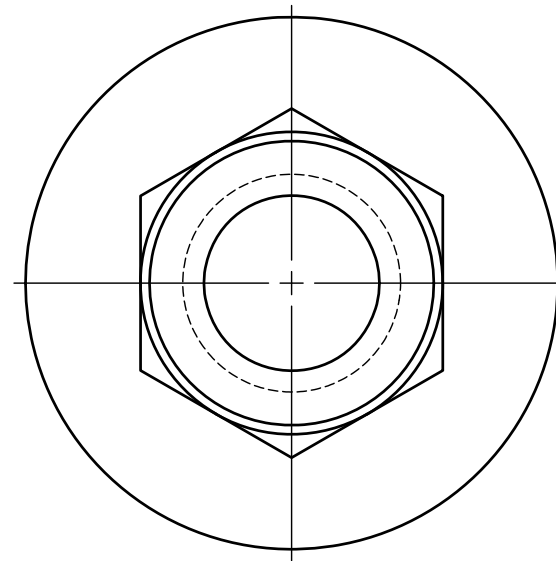



REVISIONS				DATE	ENGR
ZONE	REV.	EJN	DESCRIPTION	02/24/16	AH
-	1	-	INITIAL PROTOTYPE RELEASE		



PART NO.	L ±.005
COM5038	.375
COM5050	.500
COM5063	.625
COM5075	.750

NOTES:

1 BLAST INDICATED AREA WITH 120 GRIT ALUMINUM OXIDE AT 90 PSI.

MATERIAL	UNLESS OTHERWISE SPECIFIED: UNITS ARE IN INCHES TOLERANCES ARE: .XX = ±.03 .XXX = ±.010 ANGLES = ±.5° *THIRD ANGLE PROJECTION *DO NOT SCALE DRAWING	DRAFTER	DATE	 2151 N. Lincoln St. Burbank, CA 91504		
		ARBI H	02/24/16			
FINISH	*INTERPRET DRAWING PER ASME Y14.5-1994 *ALL SURFACES TO BE 63 RMS OR SMOOTHER *ALL DIMENSIONS AND TOLERANCES APPLY AFTER ANY FINISHES HAVE BEEN APPLIED	ENGR	DATE			
		ARBI H	02/24/16			
		DRAFT CHECK		TITLE		
		PROCESSING:	DATE	COM5000 IMPLANT		
		<input type="checkbox"/> PDF <input type="checkbox"/> ITEM CARD <input type="checkbox"/> BOM (ERP) <input type="checkbox"/> ROUTER	EST. MACH TIME			
				SCALE	DRAWING NO.	REVISION
				16:1	COM5000	1

THIS DOCUMENT AND INFORMATION ARE PROPERTY OF COMCO INC. ALL DESIGN, MANUFACTURING, USE, REPRODUCTION, AND SALES RIGHTS ARE RESERVED FOR AND BY COMCO INC., EXCEPT TO THE EXTENT RIGHTS ARE EXPRESSLY GRANTED TO OTHERS IN WRITING.