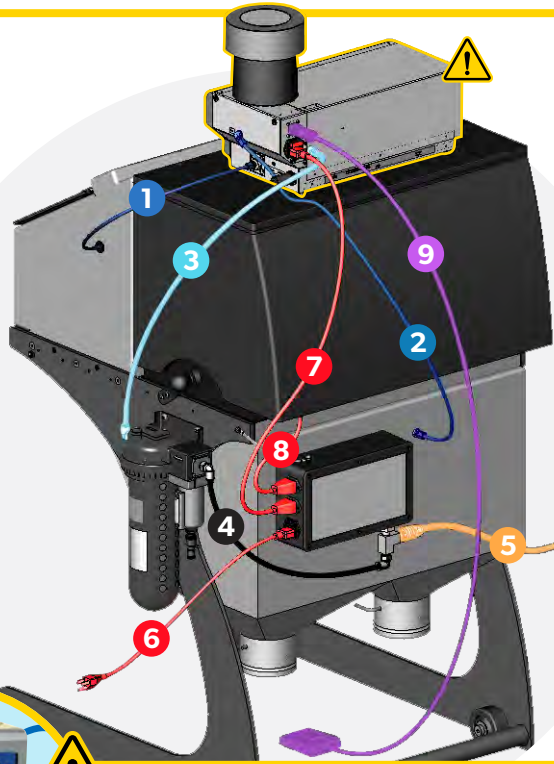


Getting started.



Before you set up and operate your Comco blaster, read and follow the safety instructions in your blaster manual.



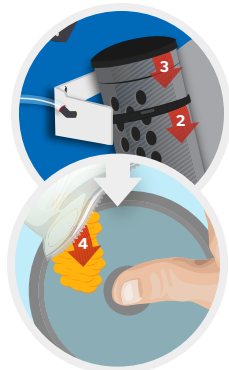
House air should be at least 10 PSI higher than your maximum blast pressure. This protects against abrasive flowing backwards through machine.



Install Air Dryer

The air dryer unit is preassembled and requires mounting to ProCenter Plus, adding the desiccant, and connecting the air hoses.

- 1 Locate screw holes and position air dryer on side of ProCenter Plus
- 2 Raise dryer cartridge to facilitate driving screws



Adding Desiccant

- 1 To change or add desiccant, shut off air and bleed system
- 2 Press tab on collar and rotate to unlock
- 3 Lower the guard and then the large bowl assembly
- 4 Fill with fresh desiccant. Note: take care that desiccant does not enter the small tube in the center of the bowl when filling it
- 5 Reassemble by following the same steps in reverse

1

Handpiece Hose

Feed handpiece from blaster into work chamber.

2

Vent Hose

Attach vent hose to back by slipping quicknut over hose, working the hose over the nipple, then hand tightening quicknut onto fitting.



3

Air From Dryer

Connect 3/8" black tubing from air dryer to blaster inlet air connector.

4

To Air Dryer

Connect 3/8" black tubing from air dryer to inlet air tee fitting.

5

Shop Air

Connect shop air using a 1/4" Industrial Quick-Disconnect.

6

Power Cord

Connect ProCenter Plus to power source.

7

Blaster Power Cord

Connect blaster power cord to ProCenter Plus.

8

Fan Power Cord

Arrives pre-installed (Disconnect for filter replacement.)

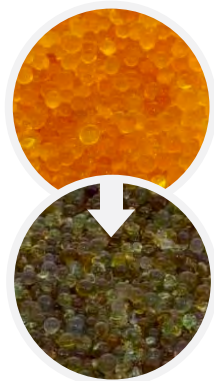
9

Foot Pedal

Connect foot pedal to blaster.

Replacement Parts.

Part	Part Number
Glass Assembly	CTR220
On/Off Switch	ST2045-3
HEPA Filter	CTR280-1
Filter Mallet Assembly	CTR305
Desiccant Pack of 4 charges	ST6104-4
Floor	CTR266-3
Iris Sold individually	CTR242
Weather Strip Sold by ft, 7ft required	ST3418-3
Fuses (250V, 3.15A) 2 required	STR2005-0315
Ionizer Bar & Cable Assembly	CTR234-3
ESD Control Handpiece Assembly	MB2598
Window Shield Sold as pack of 3 & pack of 10	WS2279-3 WS2279-10
Magnifier Sold separately	MB4320-1



Air Dryer Maintenance

The desiccant inside the air dryer bowl will gradually turn from bright orange to dark green as it becomes saturated. Change according to the instructions included with the air dryer.

For maintenance instructions on your air dryer, please see manual **AD5100 Series – Desiccant Air Dryer**.

Maintenance Interval: Check weekly

Replacement Interval: 1-2 months



HEPA Filter Maintenance

Filter cleaning mallets are located on both sides of the ProCenter Plus. Before each shift, with the power turned off, pull and release the mallets two or three times. This action will dislodge spent media that may have collected in the HEPA filter.

Maintenance Interval: Check weekly

Replacement Interval: 3-6 months